

**PolySpec**<sup>TM</sup>

**PolySpec**

**PolySpec**

**PolySpec**<sup>TM</sup>

**PolySpec**

# TuffRez® Floor & Wall Systems



**TuffRez** floors are durable polymeric systems designed for a wide range of applications. These include decorative ceramic finishes for schools, laboratories, kitchens, hospitals and shop areas. **TuffRez** functional floor systems consist of self-leveling pigmented coatings and troweled toppings for manufacturing areas and non-skid finishes for high traffic areas. Fast-setting and low temperature cure flooring is engineered for rapid turnaround.

**TuffRez** HF and MF are high performance overlays based on proprietary polyurethane/cement technology from Flowcrete Plc, the United Kingdom's largest resin manufacturer of industrial flooring. These systems provide unsurpassed thermal shock resistance and chemical protection in pharmaceutical and food and beverage plants. They incorporate Ultra Fresh®, a performance anti-microbial, which inhibits the growth of bacteria, fungi, molds and mildew.



**PolySpec®**



Self-Leveling Epoxy Coatings

Decorative Quartz Flooring

Heavy Duty Toppings

Shock Resistant Polyurethane Flooring

Semi-Flexible Flooring

Low Temperature Cure Systems

Non-Skid Floor Coatings



A New Generation of Polymers

# FlakeRez<sup>®</sup>, NovoRez<sup>®</sup> Chemical Resistant Coatings



**FlakeRez** chemical resistant barrier coatings are intended for use in severe immersion or splash/spillage conditions such as tank linings, structural steel and secondary containment. These vinyl ester and polyester coatings utilize overlapping flake technology for increased resistance to vapor transmission.

**NovoRez** coatings uniquely combine epoxy novolac and polysulfide technology. This results in high acid, caustic and solvent resistance along with elastomeric qualities for steel and concrete substrates. Typical applications include oil field tank linings, secondary containment, chemical process floor areas and hazardous waste facility flooring.

## PermaRez<sup>®</sup> Reinforced Linings

**PermaRez** reinforced composite lining systems are intended for the severest immersion conditions. They offer the advantages of outstanding chemical resistance, low coefficient of expansion and high tensile strength.

This primary technology provides a seamless surface, which compares favorably to the numerous joints found in acid-proof brick construction. This makes the system ideal for truck unloading areas, process floors, trenches, tanks, sumps, curbs and pedestals.

Another **PermaRez** technology utilizes an elastomeric basecoat for crack-bridging, a fiberglass membrane for tensile strength and a wide selection of chemical resistant topcoats.



**PolySpec<sup>®</sup>**



Flake-filled Vinyl Ester Tank Linings

Flexible Epoxy Novolac Tank Linings

Secondary Containment Coatings

Chemical Process Floors, Sumps & Trench Linings

Concrete Tank Linings

Crack-Bridging Fiberglass Composites



# THIOKOL<sup>®</sup>

## Polysulfide Sealants & Coatings



**THIOKOL** Coatings and Sealants are based on many years of proprietary polysulfide technology for building, construction and industrial applications. The advantages of coatings and sealants formulated with polysulfide polymers derive from their excellent UV resistance and weatherability, their ability to remain flexible down to -65 F, and their outstanding fuel and solvent resistance.

**THIOKOL** Sealants will provide as long as twenty-year service life under normal application conditions, which surpasses that of commonly used polyurethane sealants. Typical sealant applications include filling joints in commercial building panels, concrete slab expansion joints, airport runway joints and sealing rivets, weld seams and chimes in storage tanks.

**THIOKOL** Coatings are truly unique. Epoxy and epoxy novolac coatings formulated with polysulfide provide chemical resistant, tough, abrasion resistant properties that are superior to conventional epoxies. They are used as floor coatings, tank linings and containment coatings. Polysulfide linings for secondary containment and liners for earthen containment dikes meet or exceed regulatory requirements for these areas.



# THIOKOL<sup>®</sup>



NSF Approved Non-Sag Flexible Sealant

Commercial & Industrial Grade Sealants

Durable Flooring & Tank Linings

Flexible Containment Liners

Parking Deck Systems



# PolySpec® Marine Decking Products (U.S. Navy QPL)



**PolySpec** provides the most comprehensive line of polymeric interior and exterior deck coverings available for ships and offshore drilling platforms. These decorative and functional systems are easy to install and provide longer service life than tile, carpet or vinyl sheet products. They require no waxing or stripping, are fire retardant and offer good wear properties and chemical resistance.

**PolySpec** 7K still sets the standard for U. S. Coast Guard A-60 fire-rated deck coverings. This magnesium oxychloride cement compound contains lightweight aggregates with built-in insulation values superior to deck head insulation.

**PolySpec** underlayments are used over surfaces that are pitted, rough, have high weld seams, are out of level or need to pitch to drain. They provide a smooth surface for coatings, tile or carpet.



**PolySpec**®



Decorative, Flexible, Low Odor Systems

Decorative Quartz & Terrazzo Flooring

A-60 Fire-Rated Deck Top Insulation

Underlayments & Membranes

Low Solar Non-Skid Coatings

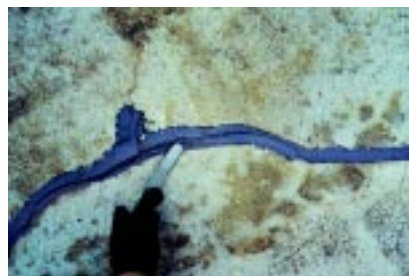


# RezRok<sup>®</sup> Concrete Repair Products & Polyspec<sup>®</sup> Sealants



**RezRok** Adhesives, Grouts and Repair Mortars are premium products for civil engineering applications and concrete repair. These products are used to resurface concrete, structurally restore cracked concrete, pitch concrete to drain, grout anchor bolts and rebars, bond new concrete to old and support heavy machinery.

**PolySpec** Sealants are specialty materials formulated for high performance joint sealing. These sealants are used in applications where conventional silicone, polyurethane and epoxy caulks fail. The **PolySpec** Chemical Resistant Sealant (CRS) consists of a flexible sealant with chemical resistant hybrid topcoat. **PolySpec**'s control joint sealants are very fast-setting, semi-flexible and can be shaved within one hour.



***PolySpec***<sup>®</sup>



Bonding Agents

Crack Injection Adhesive

Machinery Grouts

Concrete Repair Mortars

Fast-setting Polyurea Control Joint Sealants

Chemical Resistant Sealants



# Experience... Integrity... Responsiveness...

These are words we take seriously at PolySpec. Our company was founded on the principle of being attentive to customer needs. This is the basis for our existence and the reason for our success.

PolySpec is a leading manufacturer of polymer coatings, linings, flooring and sealants for construction and corrosion protection in industrial, institutional, commercial and marine markets. We differentiate ourselves in the marketplace by providing rigorous, consistent product quality, unparalleled customer service and technical support and product breadth and availability. Our goal is to provide innovative solutions to customer needs.

We are PolySpec. Welcome.

6614 Gant Road, Houston, Texas 77066  
Tel: (281) 397-0033 Fax: (281) 397-6512  
[www.polyspec.com](http://www.polyspec.com)  
e-mail: [info@polyspec.com](mailto:info@polyspec.com)



**PolySpec**<sup>®</sup>